



The Watch Parts Specialists

2020/2021 Watch Parts Catalogue

New Zealand Agents for.....



renata 
batteries


BERGEON
Depuis 1791



Introduction

Welcome to our current 2020/2021 catalogue.

We trust you find this helpful. If something is not listed, we may be still able to help so you are welcome to call.

Contact Us

Phone:	03 354 3156
Free Fax:	0800 300 335
Email:	sales@watchparts.co.nz
Web:	www.watchparts.co.nz
Address	Heywards Road, Clarkville RD 2 Kaiapoi 7692
Postal:	PO Box 4 Kaiapoi 7644

Warranty Terms

The only warranty on movements and watch parts is that they are new and in good order when supplied. They should be carefully inspected when received. Should you suspect any fault, you should contact us before fitting them.

Batteries

The warranty on batteries will cease when the individual bubble packaging is opened. If you encounter a problem with any battery, you should contact us immediately.

Other Products

All goods are guaranteed to be of merchantable quality and suitable for their designed purpose. If any product is found to be faulty within 6 months it should be returned to us with a written report describing the nature of the fault or problem. If we conclude after inspecting the item that claim was justified, we will either replace or repair it.

Terms of Trade

Ownership of all goods supplied shall remain with the vendor until all goods supplied to the Purchaser by the Vendor have been paid in full by the date due. Any order for goods or services from the Purchaser shall constitute acceptance of these conditions unless the Purchaser informs the Vendor otherwise at the time of placing any such order.

Vendor otherwise noted on the invoice, payment for goods purchased will be due by the 20th day of the following month of the invoice supplied with the goods. The Vendor reserves the right to charge the Purchaser interest on all overdue amounts at the rate of 3% per month and add all costs included in collecting debt to the amount owed.

Credits will only be allowed where faulty or incorrect goods have been supplied.

We give no warranty as to the suitability of any movement or product supplied. All reasonable steps have been taken to ensure that the information given is correct, but it will be the Purchaser's responsibility to check that the goods are suitable for the intended purpose. We accept no liability for damage caused to any watch or other item due to the fitting or use of any product supplied by Pacific Time Industries 2000.

Warranty Terms - Movements

Movements are warranted to be free of defects and in good working condition when delivered. They should be carefully inspected when received and should any fault or suspected fault be evident, you should contact us immediately.

No further warranty is available where the new movement is a substitute for one of a different caliber number, or where any movement is attached to dial by means other than by dial feet.

Where a movement is replacing another of the same caliber number and is attached to the dial by dial feet, the warranty shall be limited to 90 days from invoice date. This warranty is conditional on the work having been carried out in a professional manner and any fault or problem not being due to contamination inside the case or negligent workmanship.

Warranty Terms - Other Products

All goods supplied are warranted to be of good merchantable quality and suitable for their designed purpose. If any product is found to be faulty it should be returned to us with a written report describing the nature of the fault or problem. If we conclude after inspecting the item that the claim is warranted, we will either replace or repair the product at our cost.

The warranty on Batteries will cease when the individual bubble packaging is opened. However, if you encounter a problem with any batteries, you should contact us immediately.

Returning Faulty Goods

Claims under the terms of warranty must be returned freight paid and accompanied by a copy of the original purchase invoice. A description of the nature of the problem is also required. The decision to replace or repair the faulty item will be entirely up to Pacific Time Industries 2000.

Contents

Product	Page No
Clock and Watch Parts	1 - 13
Tooling and Equipment.....	14 - 29
Part 2	
Seiko Battery Range.....	30
Maxell Battery Range.....	31
Energizer & Conventional Battery	32
Clasp Range.....	33 -35
Capacitors and Circuits.....	36
Kits.....	37 - 38
Junghans Clock Movements.....	39
Junghans Clock Hands.....	40-41
Wellgains Clock Movemnts.....	42
Wellgains Clock Hands.....	43 - 44
Straps.....	45 - 52
Movements (Commonly Used) Price List	53
L & R Cleaners.....	54
Zenith Cleaners.....	55
Citizen / Seiko Capicitors.....	56



Batteries

A comprehensive range of quality batteries for all watch and electronic equipment. We stock Seizaiken Seiko, Renata, and Engergizer Batteries.

Battery Contacts

Available for some Swiss made movements. Please contact us for availability.

Order Code: BC + movement number



Buckles

Available in widths from 8.0 - 22.0mm. PNP and gold plated. Nickle free.

Order Code: BU + width + G or S (Gold or Silver) eg. BU 16G



Braclet End Pieces

The links that join metal straps to the watch case. Sold in pairs.

Order Code: BEP + number



Capacitors - Rechargeable Batteries

Available for some Seiko and Citizen movements. Ask us for details on prices and availability.

Order Code: CAP + Part Number

See Page 36 for complete
Product code range



Case Back Seals - Red Plastic

Used in many Swiss watches and also Lorus/Pulsar/Seiko models. Only full and half mm sizes available.

Order Code: FSP = Outside diameter required.



Case Tubes

See product list for sizes. Some are stepped and L (long) models are for double o-ring crowns.

Order Code: TU = Diameter



Circuits

For quartz movements. Most include the coil as a part of the circuit. For a full listing see product list.

See Page 36 for Complete Range

Code: EM + Movement number eg. EM 505

Clasp Range. See Pages 33, 34, 35 for full product range



Clasp - Fold Over Style - Closed End

Available from 2.0 to 16.0mm.

Gold or PNP plated.

Order Code: CLSP + width + colour (G or S)



Clasp - Fold Over Style - Open End

Same as above but with one end open with a flap that can be folded around the bracelet pin. Available in widths of 3.0 to 6.0mm only.

Order Code: CLSP + width + colour (G or S)



Clasp - Seiko Style with Safety Chain

As used on many Seiko and Citizen watches that have mesh or woven bracelets. Sizes from 6.0 to 10.0mm

also 15 and 16mm. Gold or PNP plated. Order Code: CLSP SKO + width + colour



Clasp - Tri Fold Style with or without Safety Locks

Very popular style. Available in widths of 12,14,16,18,20mm

Order Code: CLSPTF + Width + colour (G or S)

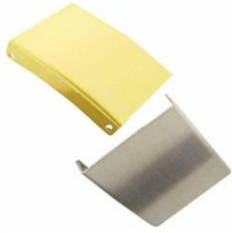
Gold and silver available



Clasp - Tri Fold with Side Release

Tri-fold clasps that feature side mounted buttons to release.
Available in 12,14,16,18, 20mm. Only in brushed stainless.

Order Code: CLSP SR + width.



Clasp Extension Links

The links fit inside the tri-fold clasps to extend the band length.
Available for 12,14,16,18,20mm clasps.

Order code: CLSP EXT + width + colour (G or S)



Clasp Extension Links Stepped

Order Code: CLSP EXT S



Slotted Buckle

Comes in Gold and Silver 2.5mm - 15.8mm

Order Code: CLSP SBEP + Size + G or S (Gold or Silver)



Double Side Click Tri-Fold Clasp

Gold - 12, 14, 16, 18, 20, 22mm - Silver 10, 12, 14, 16, 18, 20, 24mm

Order Code: CLSP DSC + size + G or S (gold or silver)



Clasp RB

Sizes available 3.0, 4.0, 5.0mm

Order Code: CLSP RB + size + G or S (gold or silver)



Butterfly Clasps for Leather Straps

Order Code: CLSP B/FL



Butterfly Clasps for Steel Straps

Order Code: CLSP B/FS



Clasp Extender

Order Code: CLSP EXT BF + size + G or S (Gold or silver)



Safety Chains

60mm Safety Chains in Gilt or Silver

Order Code: CLSP SCG G



Clock Bushes

Bergeon and KWM ranges stocked. Sold in packs of 10 pcs.

Order Codes: Bergeon = CB B + bush number.

KWM = CB K + bush number.



Clock Bush Reamers

We stock some of the smaller sizes only for Bergeon and KWM.

Order Codes: Bergeon = TL RMR B + size. KWM = TL RMR K + size.



Clock Springs

A limited selection of the most common springs. Please enquire.

Order Codes: CLK MS + size



Clock Suspension Springs

A limited range as per product list. Also 17" suspension Rod and assorted suspension feathers.

Order Code: SS 2086 + suspension number.

Clock Suspension Wires

No photo available

For 400 day clocks. 8 thicknesses available. Swiss made.

Order Code SW060 + wire thickness



Clock Oils and Greases

A comprehensive range of Moebius lubricants suitable for clocks and watches. See page 13 for product range.

Order Codes: LUB + Item reference number



Cuckoo Birds

Plastic. 1 Size only.

Order Code: CLK CUC BD



Cuckoo Clock Bellows

Five sizes: 80, 100, 120, 140, 150mm.

Order Codes: CLK CUC BEL + size.



Cuckoo Clock Chains

Two weights of chain stocked.

Order Codes: 4.8 x 6.6 x 0.90mm = CLK CUC CH L
6.4 x 8.5 x 1.05mm = CLK CUC CH H



Cuckoo Clock Hands

White plastic. Lengths 33, 36, 42, 48, 56mm.
Order Codes: HA-CUC + length.



Cuckoo Clock Hooks & Bows

Available in standard and heavy.

Order Codes: CLK CUC BOW S (standard) CLK CUC BOW H (heavy)



Clock Keys Standard

Brass. Sizes 00 - 15.

Order Code: CLKK xx

Clock Keys Long Reach

Steel. Sizes 2, 3, 4, 5 only
Order Code: CLKK L x



Clock Key - Double Ended

Steel. Small end size 000. Large ends available 4, 5, 6, 7, 8.
Order Code: CLKK DE xx



Clock Keys - Crank Winders

Steel larger sizes with wood knob. Sizes 6-16.

Order Code: CLKK CW xx

Wellgains Clock Modules - Push on hands only



Clock Modules - Simple 3 Hand

See page 40 for more product information

Available in a variety of hand heights suitable for dials of up to 25mm. There are also models that feature the "Smooth Sweep" second hand, high torque and anti-clockwise variants.



Clock Modules - Pendulum Style

The range includes 3 different hand heights. Please see page 40

Order Code: CM P + hand height required.



Clock Modules - Chiming Pendulum

Westminster chime on the hour only. Only available in medium hand height (12mm) Seiko & Hermle

Order Code: CM PC

Wellgains Clock Modules

Order Codes:

CM VS - Very Short 4.5mm

CM SS - Short Shaft 6.0mm

CM MS - Medium Shaft 12.0mm

CM LS - Long Shaft 17.0mm

CM XLS - Extra Long Shaft 24.0mm

CM/S - Small Stepless sweep 6.0mm

CM/M - Medium Stepless Sweep 12.mm

CM AL - Snap in Alarm Clock 5.5mm

CM PS - Short Pendulum 6.0mm

CM PM - Medium Pendulum 12.mm

CM PLX - Extra Long pendulum 24.0mm



Please see page 42 for Specifications of Standard and Pendulum movements

Hermal Clock Movements

Pendulum Chiming - Order Code: CM PCE

Chiming Order Code: CM MCE

Seiko Clock Movements

Pendulum Chiming - Order Code: CM PCS

SEIKO CLOCK 15.4mm SWEEP SEC-Order Code: CM /SS



Junghans Clock Movements

Please see page 39 for more information on these products

Junghans Pendulum 817

11.0mm (1-3mm Dial) Order Code: CM PSE
 16.2mm (3-7mm Dial) Order Code: CM PME
 20.1mm (7-11mm Dial) Order Code: CM PLE
 26.2mm (11-15mm Dial) Order Code: CM PXLE & CMPXXLE(15-20mm)

Junghans Quartz 838

11.0mm (1-3mm Dial) Order Code: CM: SSE
 16.2mm 3-7mm Dial) Order Code: CM: MSE
 20.1mm (7-11mm Dial) Order Code CM: LSE
 26.2mm (11-15mm Dial) Order Code CM: XLSE
 26.2mm (15-20mm dial) Order Code: CM XXLE

Junghans Quartz High Torque 838

16.2mm Extra Power (3-7mm Dial) Order Code: CM HTM
 20.1mm Extra Power (7-11mm Dial) Order Code: CM HTL

Dongguan Oka Cloc

High Torque I Movement 24.9MM CM HTXL

Clutch Wheels

Only available for some Swiss movements. Call us for Availability.

Order Code: CW + Movement number.

Coils



See product list for models available.

Order Code: CL + Movement number.

Crowns and Pushers



See listings of styles and sizes in product list.

Order Code: CR + Crown number

Date Rings



Replacement date rings are available for most movements stocked. Only for watches with the date positions at 3 and 6 o'clock. Only for date at 6 unless otherwise noted.

Order Code: DR: + Movement number

Fourth Wheels

We only stock Fourth Wheels for Movements
251.251 and 255.111

Order Code: FW + Movement number.



Glasses - Mineral, Acrylic & Sapphire

MDN NML TRG TRS DG DG/FL ETC SEIKO AQT

We stock a huge range of styles and sizes.
Please see our product list for product Range

Glass Seals



Available in heights of 0.8, 1.2, 1.25 and 1.75mm . When ordering you must advise the diameter of the watch case cavity and also the glass thickness required. Only available for round glasses. Seals for Rolex glasses also available.

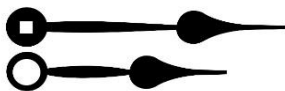
Order Code: GS + Seal Size



Greasers and Oils

We carry an extensive range of Moebius Lubricants.
Please see page 13 for product range

Order codes: LUB + product code



Hands for Clocks

HA (Push on) & HAE (Minute Nut)

When ordering you should advise the length (minute hand), colour, shape, and most importantly, the movement that they are to be fitted to.



Insertion Clocks (Fit Ups)

Available in sizes from 25-72.0mm See product list for sizes available
Order Code - IC 25 GA * IC 37 GA * IC 48 GA * IC 48 SR * IC 58 GA * IC 58 GR
IC 65 GR * IC 72 GR GA = Gold Arabic GR = Gold Roman SR = Silver Roman

Luminous Paint

We stock 3 products for use on hands and dials. Ask us for details.



Movements - Quarts & Mechanical

Our vast range of over 450 different quartz and automatic movements are listed in a separate publication.

The publication also includes substitutes for. Please see our Product Range and extensive technical information. Order Code: MM + Calibration

O-Rings and Caseback Seals



Premium quality NBR rubber seals that provide superior sealing and also red plastic seals. See listings for range. Please see our product range. Order Code: OR + thickness

Pins for Watches

Sold in packs of 10

Knurled End Pins

starred end band pin



Diameters 1.0, 1.1, 1.2mm. Contact us for stocked lengths

Order Code: PIN KP + diameter + length

Notched Pins & Tubes.



band watches

Pin 0.9mm Tube 1.2mm Lengths 12, 14, 16, 18, 20,mm.

Order Code: PIN NTP + length

Open End Pins (Split Pins)



Diameters 0.80, 0.90, 1.00, 1.2mm Lengths 5.0 to 30.0mm

Order Codes: PIN OEP + diameter + length.

Rolex Pins



Not genuine but fit just the same.

1.8 x 12mm with a 1.2mm thread. Order Code: PIN RLX LGE

1.5 X 12mm with a 1.4mm thread. Order Code: PIN RLX SML



Solid Pins

Diameters 0.8, 0.9, 1.0, 1.2, 1.3 & 1.5mm lengths. Only 8, 12, 16, 20, 24, 35mm

Order Code: PIN SP + diameter + length



Tube Pins.

Used in trifold clasps.

1.2mm lengths 12, 14, 16, 18, 20, 22, 24, 26, 28, 30mm

Order Code: PIN TP + length.

T-Bar Pins

For notched straps. Push or screw styles in gold or silver.
10 to 20mm.

Order Codes: Push Style PIN TB + length + colour

Screw Style PIN TBS + length (gold only)



Pocket Watch Keys

Complete range of sizes.

Order Code: PKW + size



Rechargeable Batteries - Capacitors

Available for most Seiko, Citizen and Casio movements. Ask for details on prices and availability.

Order Code: CAP + Code See page 55 for more details



Rubber Straps

We have a range of genuine high quality silicon rubber straps. These straps do not harden and crack like other 'Rubber' straps and are extremely comfortable to wear. See styles and sizes in product listings.



Setting Levers

We stock setting levers and other parts for some Swiss made movements. See product list for availability.

Order Code: SL + movement number.

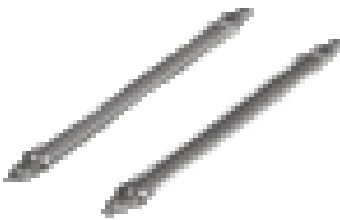
Spring Bars

Sold in packs of 10,20,50 & 100. Advise diameter 1.0mm - 2.5mm, length 6mm to 40mm, style and quantity when ordering.



Order Codes: SB + Diameter + Length + Style. Example: SB 15 16 DC

DC Double Collar springbar for attaching straps and bands.
Diameters 1.3, 1.5, 1.8mm



NC No Collar or permanent style springbars.
Diameters 1.0, 1.3, 1.5, 1.8mm

UN Universal style springbars.
Lengths to 36mm. Diameters 1.5, 1.8mm

BL Single collar tip for clasps and bracelets.
Diameters 1.3, 1.5, 1.8mm



Stem Extenders / Stem Adaptors

See the product list for sizes stocked. Note: The second part of the code is the diameter for the male end of the stem extender.

Order Code: SE + Inside thread # / Outside thread #

Stems - Split Style

Available in male and female. Only 0.90mm.

Order Code: ST SSM (male) ST SSF (female)

Stems - Winding



Available for all movements stocked and also some other calibers as well.

Order Code: SB + movement number



Suspension Springs

We carry a limited range of the popular sizes.

Order Codes: SS - 2086 + number

Mineral Glasses

See Product Range for complete Inventory List

Thicknesses: 0.8, 1.0, 1.3, 1.5, 2.0, 2.5, 3.0, 3.5, 4.0mm

Flat

Domed / Domed

Thickness: 1.0mm and some 1.5 and 2.0mm.

Domed/Flat

Flat on bottom side. A range of diameters and thickness. Advise your requirements. Order Code: C DG/FL 10, 15, 20, or 25 + Diameter

Curved

Radii: 10, 30, 40, 50

Flat Bordered

Glasses with gold or black borders, with or without numerals. Also faceted styles.

Date Bubbles

Glue to any flat mineral glasses with UV Glue.

Sapphire Glasses

Flat

Thickness of 0.80, 1.0, 1.5 and 2.0mm.

Rolex

Flat Sapphire Glasses in 4 sizes are stocked. Complete with date bubble.

Date Bubbles

Add a sapphire date bubble to any flat sapphire glass.

Acrylic Glasses

Acrylic Glasses - Non Tension Ring

MDN	Modern style, med low dome. No tension ring sizes from 10-43.3 C MDN + diameter
ETC	Similar to MDN but higher dome for older watches. Sizes 23-35.4 C ETC + diameter.
NML	Pocket watch and small clock glasses. Medium dome. Sizes from 40-47mm C MNL + diameter.
SVN	Hunter pocket watch glasses. Very low dome. Sizes 24-47cm. C SVN + diameter
CLD	Similar to MDN but have date window incorporated. Sizes from 29-32mm C CLD + diameter.
DIA	Diadem glasses

Acrylic Glasses - With Tension Rings

TRG	Domed glasses with gold tension ring. Sizes from 15 - 33mm.
TRS	Domed glasses with silver tension ring. Sizes from 15 - 33mm.
MTD	Domed glass with date bubble and tension ring. Sizes 29. - 31.6mm
AQT	For divers watches. Moderate dome. Sizes from 30 - 36mm.

Seiko, Citizen, Omega, Rolex

Includes many hard to find and obsolete models. Advise number when ordering.

Watch Parts Kits

Please see our product list for more kits.

Caseback Seal Kit	KIT FS
Clasp Kit - Fold Over Style	KIT CLSP
Clock bush set - Large Size 4pc	KIT CB
Crown Kit - Japanese Style Crowns	KIT CRK 2
Crown Kit - Screw Down Crowns	KIT CRS DK
Crown kit - Standard Water Resistant Crowns	KIT CRK 1
Glass Kit - 1.0mm Flat Standard Set	KIT GH 1
Glass Kit - 1.0mm Flat Popular Size Set	KIT GK 2
Mini O-Ring Kit - for Standard Crowns	KIT ORCH
Mini O-Ring Kit - for Standard W/R Crowns	KIT ORSDC
Mini Screw Kit	KIT MS
Open End Pin Kits / Split Pin Kits	KIT OEPK
O-Ring/Flat Seal Kit	KIT OR
Red Plastic Caseback Seal Kit	KIT FSP
Spring Bar Kit 1.5mm	KIT SB 15 DC
T-Bar Kit	KIT TB
Watchmakers Comprehensive Tool Kit	KIT WMTK

Lubricants



8000	Mechanical watches/alarm clocks. Not springs/winding mechanisms. 4ml	LUB 8000
8030	General lubricant for small/medium clocks, music boxes etc. 20ml	LUB 8030
8040	General lubricant for larger clocks, grandfather clocks etc 20ml	LUB 8040
8200	Light grease for springs etc of mechanical watch/small clocks. 20ml	LUB 8200
8300	Medium grease for winding mechanisms and where 8200 is to fluid. 20ml	LUB 8300
9000	Oil for modern quartz watches. 2ml	LUB 9000
9010	Regulator/jewel lube for small/medium mechanical watch. 5ml	LUB 9010
9020	Regulator/jewel lube for medium/larger mechanical watch 5ml.	LUB 9020
941	Synthetic oil for escapements. 2ml	LUB 941

Tooling and Equipment

Aluminium Glass Containers - Single



Available in diameters of 22, 26, 54 & 75mm

Order Code: ALC + Diameter.

Aluminium Glasstop Containers - Sets



110 x 165mm aluminium box with 54 containers 18mm in diameter.
135 x 165mm aluminium box with 20 containers 32mm in diameter.

Order Code: BOX AL + number of containers in box



Anvils - Mini

Order Code: TL ANV



Battery Meter

Suitable for silver oxide, lithium and alkaline batteries.

Order Code: TL BAT

Battery Template

Identify batteries that have non standard model codes

Order Code: TL BAT TEMP



Beading Tool Sets

12 tools and chuck handle.

Order Code: TL BTA/12



Bench Top Mats

Easy on the eyes. Non slip surface.

Order Code: TL BTM

Order Code: TL BTM BERGEON



Boxes - Storage - Plastic

170 x 135mm with 20 round containers 30mm diameter.

Order Code: BOX PL20



Boxes - Storage - Small

Clear plastic. Measure 112 x 62mm with 18 compartments

Order Code: BOX SML



Boxes - Storage - Medium

Grey plastic with clear sliding lid. Measure 112 x 62mm with 18 compartments

Order Code: BOX LGE



Bracelet Block

Holds the bracelet or band when you need to remove or fit pins. Wide slots for heavy bands.

Order Code: TL BLK W



Bracelet Vice

Made from a high density polymer so is strong and will not scratch bands.

Order Code: TL MVB

Broach (Reamers) Singles

Available in 4, 5, and 6mm

Order Codes: TL BRO + diameter



Broach (Reamers) Sets

Made in Germany. 3 sets available

Small. 12 reamers from 0.05 - 0.55mm Order Code: TL BRO/S

Medium. 12 reamers from 0.6 - 1.4mm. Order Code: TL BRO/M

Large. 6 reamers from 1.2 - 3.0mm. Order Code: TL BRO/L



Brushes - Glasgow

Available in soft, medium and hard. Also Brass

Order Code: BR G + type. (S,M,H, or B)



Brushes - Rotary - Bristle

22mm. Mandrel not included.

Order Code: BR RBH 22

Brushes - Rotary - Steel

22mm mounted on 3/32" steel shank.

Order Code: BR RBS 22



Brushes - Rotary - Brass

22mm mounted on 3/32" steel shank.

Order Code: BR RBB 22



Brushes - Scratch Brush - Glass

Swiss made. Refills available.

Order Code: TL BR SBG R/F



Brushes - Scratch Brush - Brass

Swiss made. Refills available.

Order Code: TL BR SBB Order Code: TL BRSBB R/F (Refills)



Bufs - Calico

Unbleached calico 100mm diameter. 40 sheets stiched. Leather centre.

Order Code: TL BUFC 100



Bufs - Muslin

100 x 12mm diameter. Leather centre. Order Code: TL BUFM 100

Case Holder



Holds case securely when removing back or working on the movement.

Order Code: TL WCH



Case Openers - Bar Style

Order Code: TL COB



Case Openers - Horotec Station

essential for everyone working on expensive watches. Dies for Rolex watches also available to suit tool.

Order Code: TL COSTN



Case Openers - Impact Style

Order Code TL COH

Case Openers - Jaxa Style

Order Code: TL COJ



Case Openers - Knife Style

Order Code: TL COK



Case Openers - Pocket Style

Order Style: TL COP



Case Openers - Rolex Style

With 6 dies.

Order Code: TL CORLX



Clock Key Gauge

Find the right key without the hassle

Order Code: CLK KG



Crown Winders

Great tool for fitting crowns to stems and also for winding mechanical watches. 3.0 - 3.5

Order Code: TL CWT 35



Crystal Lifters - Bergeon

For fitting and removing armoured and plexi glasses. Made by Bergeon

Order Code: TL CL

Sorry no Photo

Designer Block - Steel

Hardened steel with many grooves and channels. Specially for Jewellery Manufacturers.

Order Code: TL DBST



Dial Calipers and Digital (Verniers)

150mm in 0.02mm graduations. Great quality.

Order Code: TL DG



Diamond Tester

The latest Diamond tester. Can detect Moissanite and all diamond simulants. Fast warm up and instant readings.

Order Code: TL DT



Doming Blocks - Bronze

55 x 55mm square. Dual purpose doming block and ring anvil.

Order Code: TL DBB



Doming Blocks - Steel

55 x 55mm square. Tempered steel with high quality finish.

Order Code: TL DBS



Doming Punch Set

Set of 24 high quality doming punches from 3.0 - 25mm on wooden stand.

Order Code: TL DPS/24



Drill Sets - Mini Twist Drills

2 Sets available. Both comprises 15 high speed twist drills.

Order Codes: TL DS 0-1 Sizes 0.30 - 1.0mm

TL DS 1-2 sizes 1.05 - 2.0mm



Digital Scales - 0.01gm

High quality digital scales. Battery operated. Comes complete with calibration weight and instructions on recalibration. Accuracy to 0.01gms, Maximum weight 100gms.

Order Code: TL ES 0.01

Digital Scales - 0.001gm

High Quality digital scales. Battery operated. Comes complete with calibration weight and instructions on recalibration. Accuracy to 0.001gm. Maximum weight 100gms.

Order Code: TL ES 0.001



Files - Watchmakers - Round

1.0mm x 50mm. Specialty clockmakers file.

Order Code: TL FL R4



Files - Watchmakers - Square

1.0 x 1.0 x 50mm. Specialty clockmakers file.

Order Code: TL FL SQ 4



Files - Watchmakers - Triangular

Specialty clockmakers escapement file.

Order Code: TL FL TRI 4



Glue - GS

The traditional glue for acrylic glasses.

Order Code: GLU GS



Glue - UV (USA & Swiss)

Requires a UV light to set it off. Easy to use.

Order Code: GLU UV



Grease Pad - Silicon

Essential for all Watchmakers and anyone fitting batteries.

Anchor and Seiko options available.

Order Code: LUB PAD

Sorry no photo

Hand Fitting Levers

Set of 3 levers with holes to suit any hands.

Order Code: TL HFL



Hand Fitting Press (Horotec)

Makes the accurate fittings of hands easy.

Order Code: TL HFP

Hand Fitting Tool

Pencil style by Horotec. These are so easy to use and make fitting hands a breeze.

Order Code: TL HFL

Hand Paint - Green - Paint

Ready to use luminous paint.

Order Code: LUMO GRN PTN



Hand Paint - Green - Powder

Luminous powder. Mix with clear nail polish or lacquer.

Order Code: LUMO GRN PWD



Hand Removing Tools

A pair of high quality steel levers. Correct use prevents dial or movement damage.

Order Code: TL HRL

Hand Vices - Steel

An essential tool for all Jewellery Manufacturers.

Order Code: TL HVS



Loupe - Hand Held

20x power

Order Code: LP 20X



Loupe - Hearts & Arrows

Special loupe for checking the cut quality of diamonds, especially hearts and diamonds cut.

Order Code: LP HA



Loupe - Horotec Plastic

Superior optical quality and design. Available in 3X 4X 5X

Order Codes: LP HTP + Power required.



Loupe - Horotec Aluminium

For the professional. Superior optical quality and design. Available in 2.5X, 3.5X, 4X

Order Codes: LP HTA + power required.

Loupe - Standard



Available in 3X, 3.5X, 4X, 5X, 6.5X, 10X, 14X

Order Codes: LP + power required.

Movement Holders - With Centre Stake



Models available for most movement sizes. Essential when fitting hands to expensive movements which can be very easily damaged by over pressing.

Order Code: TL MH + ligne size of meovement.

Movement Holders - Universal Type



Use when dismantling or assembling movements. 2 models available depending on movement size.

Order Codes: TL MHBS - for movements up to 10''' 23.0mm diameter

Order Codes: TL MHBL - for movements over 10'''23.0mm diameter



Oil Cup & Stand

3 Stand oil reservoir with lid and stand to hold oilers.

Order Code: LUB OCH

Oilers



Swiss made. Available in medium, fine and very fine.

Beco and Bergeon

Order Codes: LUB OIL + size.

Pendant Drill - With Flexi-Shaft



240 watt variable speed suspension motor. 0-24,000rpm. 230/240 v.

Handpiece not included. (See below)

Order Code: TL PDR

Pendant Drill - Handpiece



High quality quick change handpiece. Only for 2.35mm shank diameter tool.

Order code: TL PDR HPQC



Pin Removing Tool - Press Style

Well designed tabletop unit. Supplied with 4 push punches and 2 screwdriver tips for fitting and removing screw type T-Bars. Also has a slotted block for holding the band. Spare tips available.

Order Code: TL H8P Tips Order Code: TL HPPRT + tip diameter.



Pin Removing Tool - Plier Type

Easy to use. Spare tips available.

Order Code: TL PL PP Tips Order Code: TL PL PPRT + Tip diameter.



Pin Removing Tool - Scissor Type

Made by Bergeon. The ultimate tool for removing bracelet pins. Also perfect for removing bands that require both ends of a springbar to be dressed at the same time.

Order Code: TL PPS Tips Order Code: TL PPS RP + (08, 09, 1.0mm)

Pins for Watches

See watch Parts Catalogue



Pin Vices - Standard

We have a range of pin vices with capacities from 0-3.2mm
Ask for details



Pin Vice - Heavy Duty

Capacity to 6mm

Order Code: TL PVH

Pliers

We stock the following pliers in either 130 or 150mm sizes.

Bent Tip TL PL B

Band Opening TL PL BO

Flat - Serrated TL PL FL SE

Loop Closing TL PL LC

Round/hollow TL PL R/H

Bead Crimping TL PL BC

Flat- smooth TL PL FL SM

Half round/flat TL PL HR/FL

Stone setting TL PL SS





Polywatch - Acrylic Polish

Great product for polishing scratches out of acrylic watch glasses and cellphone screens.

Order Code: POL PW



Press - For Watch Casebacks & Glasses

Popular press. Comes with 13 nylon dies, both flat and recessed. (for domed glasses)

Order Code: TL PR2

Press - Heavy Duty

Sorry no photo

Screw type press that comes with XXX nylon and XXX aluminium dies. Closes those tight cases with ease.

Order Code: TL PR3



Puffer - Dust Removing

Essential for all Watchmakers and those changing batteries.

Order code:



Pulse Detector - Swiss

By Horotec. Instant detection of electronic problems.

Order Code: TL PD



Punches - Asian

Order Codes: TL PU 08 for punch with a 0.80mm tip

TL PU 10 for a punch with a 1.0mm tip

Tips Order Codes: TL PURT 08 and TL PURT 10



Punches - Bergeon

Best quality. Tips sizes 0.6, 0.8, 1.0, 1.2mm. All fit the same punch body.

Order codes: TL PUB (Body only) Tip - TL BURT + diameter of tip.



Reamers - For Clock Bushing Sets

We stock a limited range of both Bergeon and KWM clock bush reamers.

Order Codes: TL RMR + letter (B or K) + size



Ring Cutter

Another essential tool for the retail Jewellers. 20mm cutting wheel.

Order Code: TL RC



Ring Cutter Wheels

Bergeon brand. Available in 20 and 30mm.

Order codes: TL RCWL (30mm)
TL RCWS (20mm)



Ring Gauge Set

Superb quality and presentation. Set of 25 rings 7mm wide and an aluminium ring stick. British sizing H - Z plus 6.

Order Code: TL RGS



Ring Sizer Set

Polished aluminium in a bunch. 2mm wide rings. Sizing is US and also metric measurements.

Order Code: TL RSZ



Ring - Stone Holders

These are dummy rings that can be used to hold gemstones so that your customers get a better idea of how they will look when mounted. Every manufacturing Jeweller should have at least one pair. Available in Gold and silver (plated steel).

Order codes: TL RHG (gold) TL RHS (silver)



Rivetting Stake - Watchmakers

Bergeon. 36 holes from 0.5 - 2.5mm.

Order Code: TL RSS



Rodico

Essential for cleaning dirt and fingerprints off movements and dials.

Order Code: TL ROD



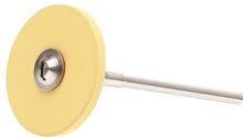
Rouge - Polishing

Red - for polishing gold and silver

White - Aluminium and brass

Green - Stainless steel and other hard metals

Order Codes: POL + Colour



Rubber Wheels - Abrasive

Available in soft medium and hard compounds. 17 or 22mm

Sold in packs of 10.

Order Code: RW + compound (S,M,or H)



Saw Blades

Premium quality piercing saw blades from Horotec.

1 gross packs (144 blades) Also sold by the dozen. Stocked blades 0, 1, 2, 3, 2/0, 3/0, 4/0, 6/0

Order Codes: TL SBS + blade reference.



Saw Frames

Adjustable length Germans style saw frames.

Order Code: TL SFA



Scratch Brush - Glass

Swiss made. Refills available.

Order Code: TL BR SBG Refils Order Code: TL BR SBG R/F



Scratch Brush - Brass

Swiss made. Refils Available.

Order Code: TL BR SBB. Refills Order Code: TL BR SBB R/F



Screwdrivers - 10 Piece Set - Bergeon

These are the best quality screwdrivers available. All come with a tube of 4 spare blades (except from some phillips models). All blades are nickel chrome molybdenum + vanadium steel, heat treated to the perfect temper than precision ground. Order Code: TL SDRT/10p B SB



Screwdriver - Bergeon Singles

Supplied with 4 spare blades. Sizes 0.60, 0.80, 1.00, 1.20mm

Order Code: TL SDRT + Size



Screwdriver - 5 Piece Set - Bergeon

In wooden outer case. Each screwdriver contains spare blades.

Order Code: TL SD/5PC



Screwdriver - 3 Piece Set - Phillips

3 Pce Phillips Screwdriver set. Note there are only 3 pce in this set. Sizes 1.6, 1.8, 2.0mm

Order Code: TL SD 3P



Screwdriver - 10 Piece Boxed - Bergeon

10 Piece quality screwdriver set - Comes with extra blades.

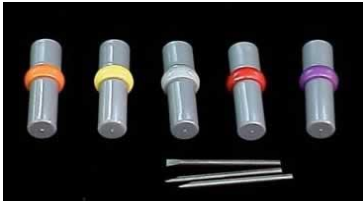
Order Code: TL SD/10PC BER BOX



Screwdriver - French Style - Singles

Phillips. Sizes available 1.5mm

Order Code: TL SDR PH



Screwdriver Blades

Bergeon replacement blades so you know the quality.

Sold in tubes of 4 blades. Sizes available 0.5, 0.6, 0.7, 0.8, 1.0, 1.2, 1.4, 1.6mm

Order Code: TL SDBS + Size

Set Screws for Screwdrivers.

Sorry no photo

Replacement set screws that lock the blades on Bergeon and most other Watchmaker screwdrivers. Sold in packs of 5

Order Code: TL SDR SS

Setting Maker Tools - By Bergeon



These are very crafty tools for making coronet type settings. So simple and easy to use.

Tool 1. Has 10 degree angle and makes settings 15mm diameter with up to 12 prongs.

Tool 2. Has 20 degree angle and makes settings 15mm diameter with up to 8 prongs.

Order Codes: TL ST 10 (10 degree model) TL ST 20 (20 degree model)

Side Cutters - Standard



Standard quality 130mm

Order Code: TL PL SC

Side Cutters - Premium Quality

Best quality side cutters available

Order Code: TL PL SCH

Sorry no photo

Silicon Grease



All rubber seals should be coated with this grease to ensure that they are not damaged and watches remain water resistant.

Order Code: LUB SIL



Silicon - Grease Pad

Essential for all Watchmakers and anyone fitting batteries.

Order Code: LUB PAD (Anchor) LUB PAD SEIKO (Seiko)



Spring Bar Tool - Asian Style

With silver barrel. Spare small end tips available.

Order Code: TL SBTA

Tips Order Code: TL SBTA TPS



Spring Bar Tool - Bergeon Style

Screw in replacement tips available.

Order Code: TL SBTB

Tips. TL SBTB TPP (fine) TL SBTB TPF (wide fork)



Threading Tap Set

5 taps .6, .7, .8, .9, 10mm. Also includes a die plate with threaded holes to match the taps.

Order Code: TL TPS



Tweezers - Asian Made

Much better quality than previously. Sizes 2 - 7 and also some cross lock, curved and diamond styles.

Order code: TW + number

Tweezers Swiss

A range of Horotec, Dumont and Bergeon - Standard and Antimagnetic

Order Code: TWS + Number



Clasp Range and Codes

Order Code	Product Discription	Order Code	Product Discription
CLSP 022 G	CLASP 2.0 / 2.2 MM GOLD	CLSP DS 10.0 S	CLASP10.0 MM Silver DoubleSlot
CLSP 022 S	CLASP 2.2 MM SILVER	CLSP DS 11.0 G	CLASP 11.0 MM GOLD Double Slot
CLSP 025 G	CLASP 2.5 MM GOLD	CLSP DS 11.0 S	CLASP11.0 MM Silver DoubleSlot
CLSP 025 S	CLASP 2.5 MM SILVER	CLSP DS 12.0 G	CLASP 12.0 MM GOLD Double Slot
CLSP 03 G	CLASP 3.0 MM GOLD	CLSP DS 12.0 S	CLASP12.0 MM Silver DoubleSlot
CLSP 03 S	CLASP 0.3 MM SILVER	CLSP DS 13.0 G	CLASP13.0 MM GOLD Double Slot
CLSP 04 G	CLASP 4.0 MM GOLD	CLSP DS 13.0 S	CLASP13.0 MM Silver DoubleSlot
CLSP 04 S	CLASP 4.0 MM SILVER	CLSP DS 14.0 G	CLASP14.0 MM GOLD Double Slot
CLSP 05 G	CLASP 5.0 MM GOLD	CLSP DS 14.0 S	CLASP14.0 MM Silver DoubleSlot
CLSP 05 S	CLASP 5.0 MM SILVER	CLSP DS 15.0 G	CLASP15.0 MM GOLD Double Slot
CLSP 06 G	CLASP 6.0 MM GOLD	CLSP DS 15.0 S	CLASP15.0 MM Silver DoubleSlot
CLSP 06 S	CLASP 6.0 MM SILVER	CLSP DS 16.0 G	CLASP16.0 MM GOLD Double Slot
CLSP 07 G	CLASP 7.0 MM GOLD	CLSP DS 16.0 S	CLASP16.0 MM Silver DoubleSlot
CLSP 07 S	CLASP 7.0 MM SILVER	CLSP DS 2.0 G	CLASP 2.0 MM GOLD Double Slot
CLSP 08 G	CLASP 8.0 MM GOLD	CLSP DS 2.0 S	CLASP 2.0 MM Silver DoubleSlot
CLSP 08 S	CLASP 8.0 MM SILVER	CLSP DS 3.0 G	CLASP 3.0 MM GOLD Double Slot
CLSP 09 G	CLASP 9.0 MM GOLD	CLSP DS 3.0 S	CLASP 3.0 MM Silver DoubleSlot
CLSP 09 S	CLASP 9.0 MM SILVER	CLSP DS 3.5 G	CLASP 3.5 MM GOLD Double Slot
CLSP 10 G	CLASP 10.0 MM GOLD	CLSP DS 3.5 S	CLASP 3.5 MM Silver DoubleSlot
CLSP 10 S	CLASP 10.0 MM SILVER	CLSP DS 4.0 G	CLASP 4.0 MM GOLD Double Slot
CLSP 11G	CLASP 11.0 MM GOLD	CLSP DS 4.0 S	CLASP 4.0 MM Silver DoubleSlot
CLSP 11S	CLASP 11.0 MM SILVER	CLSP DS 5.0 G	CLASP 5.0 MM GOLD Double Slot
CLSP 12G	CLASP 12.0 MM GOLD	CLSP DS 5.0 S	CLASP 5.0 MM Silver DoubleSlot
CLSP 12S	CLASP 12.0 MM SILVER	CLSP DS 6.0 G	CLASP 6.0 MM GOLD Double Slot
CLSP 130G	CLASP 13.0 MM GOLD	CLSP DS 6.0 S	CLASP 6.0 MM Silver DoubleSlot
CLSP 130S	CLASP 13.0 MM SILVER	CLSP DS 7.0 G	CLASP 7.0 MM GOLD Double Slot
CLSP 140S	CLASP 14.0 MM SILVER	CLSP DS 7.0 S	CLASP 7.0 MM Silver DoubleSlot
CLSP 14G	CLASP 14.0 MM GOLD	CLSP DS 8.0 G	CLASP 8.0 MM GOLD Double Slot
CLSP 150G	CLASP 15.0 MM GOLD	CLSP DS 8.0 S	CLASP 8.0 MM Silver DoubleSlot
CLSP 150S	CLASP 15.0 MM SILVER	CLSP DS 9.0 G	CLASP 9.0 MM GOLD Double Slot
CLSP 160G	CLASP 16.0 MM GOLD	CLSP DS 9.0 S	CLASP 9.0 MM Silver DoubleSlot
CLSP 160S	CLASP 16.0 MM SILVER	CLSP DSC 10G	Double side click buckle 10mm
CLSP B/F L 16	16 MM S/S B/fly Leather Bands	CLSP DSC 10S	Double side click buckle 10mm
CLSP B/F L 18	18 MM S/S B/fly Leather Bands	CLSP DSC 12G	Double side click buckle 12mm
CLSP B/F L 20	20 MM S/S B/fly Leather Bands	CLSP DSC 12S	Double side click buckle 12mm
CLSP B/F L 22	22 MM S/S B/fly Leather Bands	CLSP DSC 14G	Double side click buckle 14mm
CLSP B/F L 24	24 MM S/S B/fly Leather Bands	CLSP DSC 14S	Double side click buckle 14mm
CLSP B/F MS 4	B/F Metal Butterfly 4 X 8 X 34	CLSP DSC 16G	Double side click buckle 16mm
CLSP B/F MS 4.5	B/F Metal Bands4.5X 8.5 X 34.5	CLSP DSC 16S	Double side click buckle 16mm
CLSP B/F MS 5	B/F Metal Bands 5 X 8 X 34.5	CLSP DSC 18B	Double side click buckle 18mm
CLSP B/F MS 6	B/F Metal Bands 6 X 10X 37.5	CLSP DSC 18G	Double side click buckle 18mm
CLSP B/F MS 7	B/F Metal Bands 7 X 11 X 37.5	CLSP DSC 18S	Double side click buckle 18mm
CLSP B/F MS 8	B/F Metal Bands 8 X 11 X 40	CLSP DSC 20B	Double side click buckle 18mm
CLSP B/F MS SR 35	Metal Butterfly Side Rrl 3.5MM	CLSP DSC 20G	Double side click buckle 20mm
CLSP B/F SR 7011	S/R BUTTERFLY CLASP	CLSP DSC 20S	Double side click buckle 20mm
CLSP DS 1.8 G	CLASP 1.8 MM GOLD Double Slot	CLSP DSC 22B	Double side click buckle 18mm
CLSP DS 1.8 S	CLASP 1.8 MM Silver DoubleSlot	CLSP DSC 22G	Double side click buckle 22mm
CLSP DS 10.0 G	CLASP 10.0 MM GOLD Double Slot	CLSP DSC 22S	Double side click buckle 22mm

Clasp list continued

CLSP DSC 24B	Double side click buckle 24mm	CLSP EXT S 10 MM	CLASP EXTENDER STEP 10MM STEEL
CLSP DSC 24G	Double side click buckle 24mm	CLSP EXT S 12 MM	CLASP EXTENDER STEP 12MM STEEL
CLSP DSC 24S	Double side click buckle 24mm	CLSP EXT S 14MM	CLASP EXTENDER STEP 14MM STEEL
CLSP DSC 26B	Double side click buckle 26mm	CLSP EXT S 16MM	CLASP EXTENDER STEP 16MM STEEL
CLSP DSC 26G	Double side click buckle 26mm	CLSP EXT S 18MM	CLASP EXTENDER STEP18MM Silver
CLSP DSC 26S	Double side click buckle 26mm	CLSP EXT S 19MM	CLASP EXTENDER STEP 19MM STEEL
CLSP EXT 10G	CLASP EXTENDER	CLSP EXT S 20MM	CLASP EXTENDER STEP20MM Silver
CLSP EXT 10S	CLASP EXTENDER	CLSP EXT S 22MM	CLASP EXTENDER STEP 22MM STEEL
CLSP EXT 12G	CLASP EXTENDER 12MM	CLSP EXT S 24MM	CLASP EXTENDER STEP 24MM STEEL
CLSP EXT 12S	CLASP EXTENDER 12MM	CLSP EXT S 26MM	CLASP EXTENDER STEP 26MM STEEL
CLSP EXT 13G	CLASP EXTENDER 13MM	CLSP R 02 G	CLASP R 2.0MM Gold
CLSP EXT 13S	CLASP EXTENDER 13MM	CLSP R 02 S	CLASP 2.0 MM Silver
CLSP EXT 14G	CLASP EXTENDER 14MM	CLSP R 03 G	CLASP 3.0 MM GOLD
CLSP EXT 14S	CLASP EXTENDER 14MM	CLSP R 03 S	CLSP 3.0 MM PNP
CLSP EXT 15G	CLASP EXTENDER 15MM	CLSP R 04 G	CLASP 4.0 MM GOLD
CLSP EXT 15S	CLASP EXTENDER 15MM	CLSP R 04 S	O END CLASP 4.0 MM S
CLSP EXT 16G	CLASP EXTENDER 16MM	CLSP R 05 G	CLASP 5.0 MM GOLD
CLSP EXT 16S	CLASP EXTENDER 16MM	CLSP R 05 S	O END CLASP 5.0 MM S
CLSP EXT 17G	CLASP EXTENDER 17MM	CLSP R 06 G	CLASP 6.0 MM GOLD
CLSP EXT 17S	CLASP EXTENDER 17MM	CLSP R 06 S	O END CLASP 6.0 MM S
CLSP EXT 18G	CLASP EXTENDER 18MM	CLSP R 07 G	CLASP 7.0 MM GOLD
CLSP EXT 18S	CLASP EXTENDER 18MM	CLSP R 07 S	O END CLASP 7.0 MM S
CLSP EXT 20G	CLASP EXTENDER 20MM	CLSP R 08 G	CLASP 8.0 MM GOLD
CLSP EXT 20S	CLASP EXTENDER 20MM	CLSP R 08 S	O END CLASP 8.0 MM S
CLSP EXT BF 12/07G	CLASP EXTENDER 12 MM GILT	CLSP R 09 G	OPEN END CLASP 9.0 MM G
CLSP EXT BF 12/07S	CLASP EXTENDER 12 MM SILVER	CLSP R 09 S	O END CLASP 9.0 MM S
CLSP EXT BF 14/07G	CLASP EXTENDER 14 MM GILT	CLSP R 10 G	OPEN END CLASP 10.0 MM G
CLSP EXT BF 14/07S	CLASP EXTENDER 14 MM SILVER	CLSP R 10 S	O END CLASP 10.0 MM S
CLSP EXT BF 16/08G	CLASP EXTENDER 16 MM GILT	CLSP R 11 G	OPEN END CLASP 11.0 MM Gold
CLSP EXT BF 16/08S	CLASP EXTENDER 16 MM SILVER	CLSP R 11 S	O END CLASP 11.0 MM Silver
CLSP EXT BF 16/09G	CLASP EXTENDER 16 MM GOLD	CLSP R 12 G	OPEN END CLASP 12.0 MM Gold
CLSP EXT BF 16/09S	CLASP EXTENDER 16 MM SILVER	CLSP R 12 S	O END CLASP 12.0 MM Silver
CLSP EXT BF 18/08G	CLASP EXTENDER 18 MM GILT	CLSP R 13 G	OPEN END CLASP 13.0 MM Gold
CLSP EXT BF 18/08S	CLASP EXTENDER 18 MM SILVER	CLSP R 13 S	O END CLASP 13.0 MM Silver
CLSP EXT BF 18/09G	CLASP EXTENDER 18/09 MM GOLD	CLSP R 14 G	OPEN END CLASP 14.0 MM Gold
CLSP EXT BF 18/09S	CLASP EXTENDER 18 MM SILVER	CLSP R 14 S	OPEN END CLASP 14.0 MM Silver
CLSP EXT BF 18/10G	CLASP EXTENDER 18 MM GOLD	CLSP R 15 G	OPEN END CLASP 15.0 MM Gold
CLSP EXT BF 18/10S	CLASP EXTENDER 18 MM SILVER	CLSP R 15 S	OPEN END CLASP 15.0 MM Silver
CLSP EXT BF 20/10G	CLASP EXTENDER 20 MM GILT	CLSP R 16 G	OPEN END CLASP 16.0 MM Gold
CLSP EXT BF 20/10S	CLASP EXTENDER 20 MM SILVER	CLSP R 16 S	OPEN END CLASP 16.0 MM Silver
CLSP EXT BF 20/12G	CLASP EXTENDER 20MM GOLD	CLSP RB 03 G	CLASP 3.0 MM GOLD
CLSP EXT BF 20/12S	CLASP EXTENDER 20 MM SILVER	CLSP RB 04 G	CLASP 4.0 MM GOLD
CLSP EXT S 12MM	CLASP EXTENDER STEP 12MM GOLD	CLSP RB 04 S	CLASP RB 4.0 MM SILVER
CLSP EXT S 14 MM	CLASP EXTENDER STEP 14MM GOLD	CLSP RB 05 G	CLASP 5.0 MM GOLD
CLSP EXT S 16MM	CLASP EXTENDER STEP 16MM GOLD	CLSP RB 05 S	CLASP RB 5.0 MM PNP
CLSP EXT S 18 MM	CLASP EXTENDER STEP 18MM GOLD	CLSP RB 06 G	CLASP RB 6.0 MM GOLD
CLSP EXT S 19MM	CLASP EXTENDER STEP 19MM GOLD	CLSP RB 06 S	CLASP RB 6.0 MM SILVER
CLSP EXT S 20MM	CLASP EXTENDER STEP 20MM GOLD	CLSP SBEP 10.8 G	S Slot Buc withend Pcs10.8mm G
CLSP EXT S 22 MM	CLASP EXTENDER STEP 22MM GOLD	CLSP SBEP 10.8 S	S Slot Buc withend Pcs10.8mm S

Clasps list continued

CLSP SBEP 11.8 G	S Slot Buc withend Pcs11.8mm G	CLSP SR 16	SIDE RELEASE TRIFOLD CLASP 16
CLSP SBEP 11.8 S	S Slot Buc withend Pcs11.8mm S	CLSP SR 16G 1B	Trifold 1 Button Side Release
CLSP SBEP 12.8 G	S Slot Buc withend Pcs12.8mm G	CLSP SR 16S 1B	Trifold 1 Button Side Release
CLSP SBEP 12.8 S	S Slot Buc withend Pcs12.8mm S	CLSP SR 18	SIDE RELEASE TRIFOLD CLASP 18
CLSP SBEP 13.8 G	S Slot Buc withend Pcs12.8mm G	CLSP SR 18G 1B	Trifold 1 Button Side Release
CLSP SBEP 13.8 S	S Slot Buc withend Pcs13.8mm G	CLSP SR 18S 1B	Trifold 1 Button Side Release
CLSP SBEP 14.8 G	S Slot Buc withend Pcs14.8mm G	CLSP SR 20	SIDE RELEASE TRIFOLD CLASP 20
CLSP SBEP 14.8 S	S Slot Buc withend Pcs14.8mm S	CLSP SR 20G 1B	Trifold 1 Button Side Release
CLSP SBEP 15.8 G	S Slot Buc withend Pcs15.8mm G	CLSP SR 20S 1B	Trifold 1 Button Side Release
CLSP SBEP 15.8 S	S Slot Buc withend Pcs15.8mm S	CLSP SR 22	SIDE RELEASE TRIFOLD CLASP 22
CLSP SBEP 2.8 G	S Slot Buc withend Pcs 2.8mm G	CLSP SR 22G 1B	Trifold 1 Button Side Release
CLSP SBEP 2.8 S	S Slot Buc withend Pcs 2.8mm S	CLSP SR 22S 1B	Trifold 1 Button Side Release
CLSP SBEP 3.8 G	S Slot Buc withend Pcs 3.8mm G	CLSP SR 24	SIDE RELEASE TRIFOLD CLASP 24
CLSP SBEP 3.8 S	S Slot Buc withend Pcs 3.8mm S	CLSP TF 10	TRIFOLD CLASP 10MM LOCK
CLSP SBEP 4.8 G	S Slot Buc withend Pcs 4.8mm G	CLSP TF 10 NL	10 MM TRIFOLD CLASP SS NO LOCK
CLSP SBEP 4.8 S	S Slot Buc withend Pcs 4.8mm S	CLSP TF 12	TRIFOLD CLASP 12MM LOCK
CLSP SBEP 5.8 G	S Slot Buc withend Pcs 5.8mm G	CLSP TF 12 NL	TRIFOLD CLASP 12 MM NO LOCK
CLSP SBEP 5.8 S	S Slot Buc withend Pcs 5.8mm S	CLSP TF 14	TRIFOLD CLASP 14 MM LOCK
CLSP SBEP 6.8 G	S Slot Buc withend Pcs 6.8mm G	CLSP TF 14 NL	TRIFOLD CLASP 14 MM NO LOCK
CLSP SBEP 6.8 S	S Slot Buc withend Pcs 6.8mm S	CLSP TF 16	TRIFOLD CLASP 16 MM LOCK
CLSP SBEP 7.8 G	S Slot Buc withend Pcs 7.8mm G	CLSP TF 16 NL	TRIFOLD CLASP 16MM NO LOCK
CLSP SBEP 7.8 S	S Slot Buc withend Pcs 7.8mm S	CLSP TF 18	TRIFOLD CLASP 18 MM LOCK
CLSP SBEP 8.8 G	S Slot Buc withend Pcs 8.8mm G	CLSP TF 18 NL	TRIFOLD CLASP 18 MM NO LOCK
CLSP SBEP 8.8 S	S Slot Buc withend Pcs 8.8mm S	CLSP TF 20	TRIFOLD CLASP 20 MM LOCK
CLSP SBEP 9.8 G	S Slot Buc withend Pcs 9.8mm G	CLSP TF 22	TRIFOLD CLASP 22 MM LOCK
CLSP SBEP 9.8 S	S Slot Buc withend Pcs 9.8mm S	CLSP TFG 10	TRIFOLD CLASP GOLD 10mm
CLSP SCH G	60MM SAFETY CHAIN GILT	CLSP TFG 12	GOLD TRIFOLD CLASP 12 MM
CLSP SCH S	60MM SAFETY CHAIN SILVER	CLSP TFG 14	TRIFOLD CLASP GOLD 14mm
CLSP SKO 06 G	SEIKO CLASP 6 MM GILT	CLSP TFG 16	GOLD TRIFOLD CLASP 16 MM
CLSP SKO 06 S	SEIKO CLASP 6 MM SILVER	CLSP TFG 18	GOLD TRIFOLD CLASP 18 MM
CLSP SKO 07 G	SEIKO CLASP 7 MM GILT	CLSP TFG 20	GOLD TRIFOLD CLASP 20 MM
CLSP SKO 07 S	SEIKO CLASP 7 MM SILVER		
CLSP SKO 08 G	SEIKO CLASP 8 MM GILT		
CLSP SKO 08 S	SEIKO CLASP 8 MM SILVER		
CLSP SKO 09 G	SEIKO CLASP 9 MM GILT		
CLSP SKO 09 S	SEIKO CLASP 9 MM SILVER		
CLSP SKO 10G	SEIKO CLASP 10 MM GILT		
CLSP SKO 10S	SEIKO CLASP 10 MM SILVER		
CLSP SKO 15G	SEIKO CLASP 15 MM GILT		
CLSP SKO 15S	SEIKO CLASP 15 MM SILVER		
CLSP SKO 16G	SEIKO CLASP 16 MM GILT		
CLSP SKO 16S	SEIKO CLASP 16 MM SILVER		
CLSP SR 10	SIDE RELEASE TRIFOLD CLASP 10M		
CLSP SR 12	SIDE RELEASE TRIFOLD CLASP 12		
CLSP SR 12G 1B	Trifold 1 Button Side Release		
CLSP SR 12S 1B	Trifold 1 Button Side Release		
CLSP SR 14	SIDE RELEASE TRIFOLD CLASP 14		
CLSP SR 14G 1B	Trifold 1 Button Side Release		
CLSP SR 14S 1B	Trifold 1 Button Side Release		

Capacitors - Rechargeable Batteries

Order Code	Product Discription	Order Code	Product Discription
CAP 3023.24H/34T	CAPACATOR FOR V17 SERIES SEIKO	CAP CT295.34	CAPACITOR FOR 78 SERIES CITIZE
CAP 3023.24R	CAPACITOR FOR 7M SERIES SEIKO	CAP CT295.41	CAPACITOR FOR A3 SERIES CITIZE
CAP 3023.24X	CAPACITOR FOR 5J SERIES SEIKO	CAP CT295.45/63	CAPACITOR FOR B230
CAP 3023.24Y	CAPACITOR FOR 5K/V1 SERIES SEI	CAP CT295.51	CAPACITOR FOR EOOM (MT621)
CAP 3023.34T/24H	CAPACATOR FOR SEIKO	CAP CT295.55 *	CAPACITOR FOR F810M (MT621)
CAP 3023.44Z	CAPACITOR FOR 5M62	CAP CT295.56	CAP FOR CITIZEN RANGE(MT920)
CAP 3023.5MZ	CAPACATOR FOR 5M SERIES SEIKO	CAP CT295.60	CAPACITOR FOR B232M
CAP 3026.24X	CAPACATOR FOR V137 SEIKO	CAP CT295.67	CAPACITOR FOR G620M
CAP 3027.26T	CAPACATOR FOR V11 SERIES SEIKO	CAP CT295.758*	CAPACITOR
CAP 3027.29Y	Capacitor for V187A	CAP CT295.76/61	CAPACITOR =CT295.61 FOR B023M
CAP 3027.3MZ	CAPACATOR FOR 3M21A SEIKO	CAP CTL1025	CAPACITOR FOR CASIO
CAP 3029.111	SEIKO CAPACATOR	CAP CTL1616	CAPACITOR FOR CASIO
CAP 3029.116	SEIKO CAPACATOR	CAP CTL920	CAPACITOR FOR CASIO
CAP CT295.29	CAPACITOR FOR CITIZEN 0W50	CAP ML2016	CAPACITOR FOR CASIO
CAP CT295.33	CAPACITOR FOR 8511A		

Circuits

EM 210.001	210.001 CIRCUIT	EM 955.112 (BLUE)*	CIRCUIT 955 SERIES WITH 3 HAND
EM 251.262	ELECTRONIC MODULE #4000	EM 955.114 3H GREEN	CIRCUIT FOR 955.114 3H
EM 251.265	CIRCUIT 251.265	EM 955.2H	CIRCUIT FOR 955.432
EM 251.272	ELECTRONIC MODULE #4000	EM 956.032 2H#	CIRCUIT FOR 956.032
EM 251.471	CIRCUIT 251.471	EM 956.1 3H	CIRCUIT FOR 956.112
EM 255.2H	255 CIRCUIT FOR 2 HAND MODELS	EM 956.4 3H	CIRCUIT FOR 956.412
EM 255.3H*	255 CIRCUIT FOR 3 HAND MODELS	EM 963.124	CIRCUIT FOR 963.124
EM 256.2H	ELECTRONIC MODULE 256. 2 HAND	EM 976.00X	CIRCUIT FOR 976.00X
EM 256.3H	ELECTRONIC MODULE FOR 256.111	EM 978.00X	CIRCUIT FOR 978.00X
EM 280.001	CIRCUIT FOR 280.002	EM 980.105	CIRCUIT 980.163/105/103/101/
EM 282.001	CIRCUIT FOR 282.001	EM 980.2H	980. CIRCUIT FOR 2 HAND MODELS
EM 312 - 315	CIRCUIT FOR 312 TO 315	EM E03	CIRCUIT FOR E03.001
EM 317/103	CIRCUIT	EM F0S	ELECTRONIC MODULE FO SERIES
EM 502 - 519	CIRCUIT FOR 502 TO 519	EMA 251.251	ADDITIONAL CIRCUIT #4012
EM 5120	CIRCUIT FOR 5120	EMA 251.272	ADDITIONAL CIRCUIT #4012
EM 555.XX	ELECTRONIC MODULE (3 HAND)		
EM 578.002	CIRCUIT		
EM 579.2H	CIRCUIT FOR 579.001/562.001		
EM 582 - 585	CIRCUIT FOR 582 583 585		
EM 5Y20/5Y30	CIRCUIT FOR 5Y20/5Y30		
EM 6W50	CIRCUIT FOR 6W50		
EM 702 - 788#	CIRCUIT FOR 701 TO 788		
EM 732	CIRCUIT FOR 732 & 1032		
EM 751	CIRCUIT FOR 751 751E		
EM 753	CIRCUIT FOR 753		
EM 785	CIRCUIT FOR 772-775 782-785		
EM 8154	CIRCUIT FOR ISA 8154 SERIES		
EM 8161	CIRCUIT FOR ISA 8181 SERIES		
EM 8181	CIRCUIT FOR ISA 8181 SERIES		
EM 901.001	CIRCUIT FOR 901.001		

Stocked Kits

KIT BC 2	BATTERY CLAMP KIT 2	KIT CR S Big	Big Size CROWN KIT Silver
KIT BC ETA	BATTERY CLAMP KIT FOR ETA	KIT CR SDCK	SCREW DOWN CROWN KIT
KIT BEP	METAL END PINS ASSORTMENT KIT	KIT CR250	CR Kit assorted S/G 250pcs
KIT C 15	GLASS KIT 1.5 MM (SML 66)	KIT CT	CROWN CASE TUBE KIT 90pc
KIT C 20	GLASS KIT 2.0 MM POP SIZE37PCS	KIT D/E	D/E RING KIT
KIT C 20 BIG	GLASS KIT 2.0 MM 170-350 0.1	KIT DG 10	DOMED GLASS KIT 1.0mm
KIT CB	SELECTION OF 4 LGE CLOCK BUSHE	KIT DG 15	GLASS KIT 1.5MM DG 200-370
KIT CB B	Clock Bush Set Bergeon	KIT DG 20	HEAVY DOMED GLASS KIT 2.0mm
KIT CLK TPA	TAPER PINS - ASSORTED	KIT DG/FL 10	SINGLE DOMED GLASS KIT 170-350
KIT CLK TPB	TAPERED BRASS CLOCK PINS	KIT DG/FL 15	SINGLE DOMED GLASS KIT 230-400
KIT CLK TPS	TAPERED STEEL CLOCK PINS	KIT DG/FL 20	SINGLE DOMED GLASS KIT 290-435
KIT CLSP B/F L	S/ Steel B/fly Leather Bands	KIT DG/FL 25	SINGLE DOMED GLASS KIT 290-435
KIT CLSP B/F M	S/ Steel B/fly For Metal Bands	KIT FGKB	FLAT GLASS KIT BLACK INDEX
KIT CLSP DS G	KIT 34 PCS GOLD DOUBLE SLOT	KIT FGKG	FLAT GLASS KIT GOLD INDEX
KIT CLSP DS S	KIT 34 PCS SILVER DOUBLE SLOT	KIT FS *	FLAT RING SEAL KIT
KIT CLSP DSC S 7pce	Clasp Double side click buckle	KIT FSP BECO	PLASTIC CASEBACK RING KIT
KIT CLSP EXT BUCKLE	CLASP buckle Ext Bi Fold	KIT FSP SP	RED CASEBACK KIT 185-330
KIT CLSP EXT G	3 FOLD CLASP EXTENSION KIT GLD	KIT FSP SP B	RED CASEBACK KIT 335-415
KIT CLSP EXT S	3 FOLD CLASP EXTEN/KIT STEEL	KIT GBC	CURVED GLASS BLANK KIT
KIT CLSP EXTS G	CLASP EXTENSION WITH STEP	KIT GBR/FL	DOMED /FLAT GLASS KIT
KIT CLSP EXTS S	CLASP EXTENTION WITH STEP	KIT GK1	GLASS KIT 161 - 360 MM
KIT CLSP OE G/S	CLASP KIT Open End Gold/Silver	KIT GK2	GLASS KIT - 1 MM POPULAR SIZES
KIT CLSP OE S	CLASP KIT Open End Silver	KIT GK73	GLASS KIT 1.5 MM POP SIZE47PCS
KIT CLSP SS G	Single Slot Gold 1.8mm-16mm	KIT GK75	GLASS KIT 2.5 MM POP SIZE37PCS
KIT CLSP SS S	Single Slot Silver 1.8mm-16mm	KIT GS	GLASS STONES
KIT CLSPSKO	SEIKO CLASP KIT	KIT GS PP10	GLASS STONES (30)
KIT CM MS HA132 W	Clock Kit 12mm Shaft HA132	KIT GS PP11	GLASS STONES 1.75 MM (12)
KIT CM MS HA95 W	Clock Kit 12 mm Shaft HA95	KIT GS PP14	GLASS STONES 2.0/2.1 MM (30)
KIT CM MSE HAE102 J	Clock Kit Dial 3-7mm HAE 102	KIT GS PP19	GLASS STONES 2.5/2.6 MM (30)
KIT CM MSE HAE134 J	Clock Kit Dial 3-7mm HAND134	KIT GS PP2	GLASS STONES 1.0 MM (12)
KIT CM NUTS J	Clock Moment Nuts Junghans	KIT GS PP3	GLASS STONES 1.0/1.1 MM(30)
KIT CM NUTS M	Clock Nuts for mechananical MM	KIT GS PP4	GLASS STONES 1.12 MM (12)
KIT CM SS HA 132 W	Clock Kit 6mm Shaft HAND132	KIT GS PP5	GLASS STONES 1.2/1.3 MM (30)
KIT CM SS HA 95 W	Clock Kit 6mm Shaft HAND 95	KIT GS PP6	GLASS STONES 1.3/1.35 MM (30)
KIT CM SSE HAE102 J	Clock Kit Dial 1-3 mm HAE102	KIT GS PP8	GLASS STONES 1.50 MM (12)
KIT CM SSE HAE134 J	Clock Kit Dial 1-3 mm HAE134	KIT GS PP9	GLASS STONES 1.5/1.6 MM (30)
KIT CM Washers	Clock Washers 144 pcs	KIT Hands	HANDS SETS FOR MINUTE NUT CM
KIT CR 51	CR Kit 5pc Silv&5pc Gold 90pcs	KIT IR 08	I-RING KIT 0.8 mm x 0.4 mm
KIT CR AS1 Euro	CR Kit 12pc Silv/ Gold 144pcs	KIT IR 125	I-RING KIT 1.25 mm x 0.4 mm
KIT CR Black	Crown Kit Black 3-7mm 30pcs	KIT IR 175	I-RING KIT 1.75 mm x 0.4 mm
KIT CR DOR G	DOUBLE O-RING GOLD CROWN KIT	KIT KEEPER BL	PVC KEEPERS FOR LEATHER STRAPS
KIT CR DOR S	DOUBLE O-RING STEEL CROWN KIT	KIT KP 09	KNURLED PIN 0.9 X 22-36MM
KIT CR E	CROWN KIT - EUROPEAN S/S	KIT KP 10	KNURLED PIN 1.0 X 22-36MM
KIT CR G Big	Big Size CROWN KIT Gold	KIT LSM	T-616Q Mens leather Strap
KIT CR JAP	CROWN KIT - JAPANESE	KIT LUMO WHT	WHITE HAND PASTE
KIT CR RLX	Crown Kit RLX 5.3/6.0/7.0	KIT MBEP	METAL BAND END PIECE KIT
KIT CR Rose	Crown Kit Rose 3-7mm 30pcs	KIT MHP	PACK OF PLASTIC CASE RINGS
KIT CR S	Kit Crown Seiko	KIT MINI O/R	MINI O-RING KIT

Stocked Kits Continued

KIT MORK	MINI O-RING KIT	KIT SE	STEM EXTENDER KIT/T-678-SE65
KIT OEP 08	OPEN END PIN KIT 0.8 MM	KIT SP 08	SOLID PIN KIT 0.80 MM
KIT OEP 09	OPEN END PIN KIT 0.9 MM	KIT SP 09	SOLID PIN KIT 0.90 MM
KIT OEP 10	OPEN END PIN KIT 1.0 MM	KIT SP 10	SOLID PIN KIT 1.0 MM
KIT OEP 12	OPEN END PIN KIT 1.2 MM	KIT SP 11	SOLID PIN KIT 1.10 MM
KIT OEP 12 L	OPEN END PIN KIT 1.2 MM LARGE	KIT SP 12	SOLID PIN KIT 1.20 MM
KIT OR PS	POPULAR SIZE O RING SET	KIT SS	Suspension Springs 12pcs 02-06
KIT OR#	O-RING KIT1000 PCS SET	KIT ST ETA	ETA Stem Kit T-641
KIT OR0.9	O-RINGS 0.9MM	KIT ST SML03	Stem Kit
KIT OR1.0	O-RINGS 1.0MM	KIT ST SML04	Stem Kit
KIT ORCR	O-RING KIT FOR W/R CROWNS	KIT SUP	SUNDRY PIN KIT
KIT ORCR SEIKO	SEIKO O-RING KIT W/R CROWNS	KIT TB	T BAR PIN KIT
KIT ORCR01 T-607-OFC10	MINI ORING 0.80x0.40(607-OFC10	KIT TBS SS	T BAR SCREW PIN KIT S/12-30mm
KIT ORCR02 T-607-OFC10	MINI ORING 1.0x0.40(607-OFC10	KIT TF Citizen	CITIZEN STYLE CLSP 10-20mm
KIT ORCR03 T-607-OFC10	MINI ORING 1.0x0.50(607-OFC10	KIT TP 10	TubePin 1.0 16-30mm Head 2mm
KIT ORCR04	MINI ORING 0.50x0.50 (T-607M)	KIT TP 12	TubePin 1.2 16-30mm Big Head3m
KIT ORCR06	MINI ORING 0.45x0.45 (T-607M)	KIT TP L	PRESSURE PIN KIT (BIG HEAD1.8)
KIT ORCR08	MINI ORING NO8 From Kit T-607M	KIT TP X2 1.0m	Tube with 2 Pins 10 -24 1.0mm
KIT ORCR10	MINI ORING 0.60x0.55 (T-607M)	KIT TP X2 1.2m	Tube with 2 Pins 10 -20 1.2mm
KIT ORCR13	MINI ORING 0.70x0.40 (T-607M)		
KIT ORCR14	MINI ORING 0.70x0.45 (T-607M)		
KIT ORCR15	MINI ORING 0.70x0.50 (T-607M)		
KIT ORCR16	MINI ORING 0.70x0.55 (T-607M)		
KIT ORCR17	MINI ORING 0.70x0.60 (T-607M)		
KIT ORSDC	O-RING KIT FOR SCREW CROWNS		
KIT PRTK	PIN REMOVING TOOL KIT		
KIT PWG	POCKET WATCH CROWN KIT - GOLD		
KIT PWS	POCKET WATCH CROWN SET -STEEL		
KIT RLX PIN	ROLEX BRACELET SCREW PIN KIT		
KIT RLX S/B	ROLEX SPRING BAR KIT		
KIT SB	SLOTTED BUCKLE WITH END PC(114)		
KIT SB 13 BL	SPRING BAR KIT 1.3MM BL(120pc)		
KIT SB 13 DC	SPRING BAR KIT 1.3MM DC(120pc)		
KIT SB 15 BL	SPRING BAR KIT 1.5MM BL(360pc)		
KIT SB 15 CATCH	SPRING BAR KIT 1.5 MM CATCH NC		
KIT SB 15 DC 16-34	S/BAR KIT 1.5 MM DC 16-34mm		
KIT SB 15 DC 6-23	S/BAR KIT 1.5 MM DC 6-23mm		
KIT SB 15 DC BIG	SPRING BAR KIT 1.5 MM DC		
KIT SB 15 NC	SPRING BAR KIT		
KIT SB 18 BL	SPRING BAR 1.78 MM BL(180pc)		
KIT SB 18 DC 16-34	S/BAR KIT 1.78 MM DC 16-34mm		
KIT SB 18 DC 6-23	S/BAR KIT 1.78 MM DC 6-23mm		
KIT SB 18 DC BIG*	SPRING BAR KIT 1.78 MM DC BIG		
KIT SB XL	EXTRA LONG SPRING BAR KIT		
KIT SBE	BALL END SPRINGBAR KIT		
KIT SBF	FEMALE UNIVERSAL SPRINGBARS		
KIT SC10	SAPPHIRE GLASS KIT 1.0MM		
KIT SCL	LARGE SCREW KIT 1000pc		
KIT SCM	SCREW KIT ASSORTMENT Mini170pc		
KIT SCS	SCREW KIT ASSORTMENT 250pc		

Pacific Time Industries 2000

Ph: 03 354 3156, Free Fax: 0800 300 335, email: sales@watchparts.co.nz

Junghans Clock Movments

We are now supplying German Junghans Quarts clock movements in both Standard, High Torque and Pendulum models. These movments come with a minute nut fitment

Purchase 6 or more mixed Junghans Movements and get a 10% discount.



Code	Junghans Pendulum	Information	Code	Junghans Quartz
CM PSE	11.0mm \$19.95 (1-3mm dial)	Recommended hand up to 140mm	CM SSE	11.0mm \$10.95pc (1-3mm dial)
CM PME	16.2mm \$19.95 (3-7mm dial)	Pendulum weight up to 80gm	CM MSE	16.2mm \$10.95 (3-7mm dial)
CM PLE	20.1mm \$19.95 (7-11mm dial)	Pendulum length up to 500mm	CM LSE	20.1mm \$10.95 (7-11mm dial)
CM PXLE	26.2mm \$21.95 (11-15mm dial)		CM XLSE	26.2mm \$11.95 (11-15mm dial)
CM PXXLE	26.2mm \$21.95 (15-20mm dial)		CM XXLSE	26.2mm \$11.95 (15-20mm dial)

Junghans Quartz High Torque



16.2mm Extra Power \$14.95 (3-7mm dial) Order Code: CM HTM
 20.1mm Extra.Power \$15.95 (7-11mm dial) Order Code: CM HTL
 High Torque movement light hands up to 400mm

Chiming / Pendulum Movements

Seiko 16mm Pend/Chime (No speaker) \$59.95 Order Code: CM PCS
 Hermle 16mm Pend/Chime 780110 \$89.95 Order Code: CM PCE
 Hermle 16mm Chime 781110 \$79.95 Order Code: CM MCE

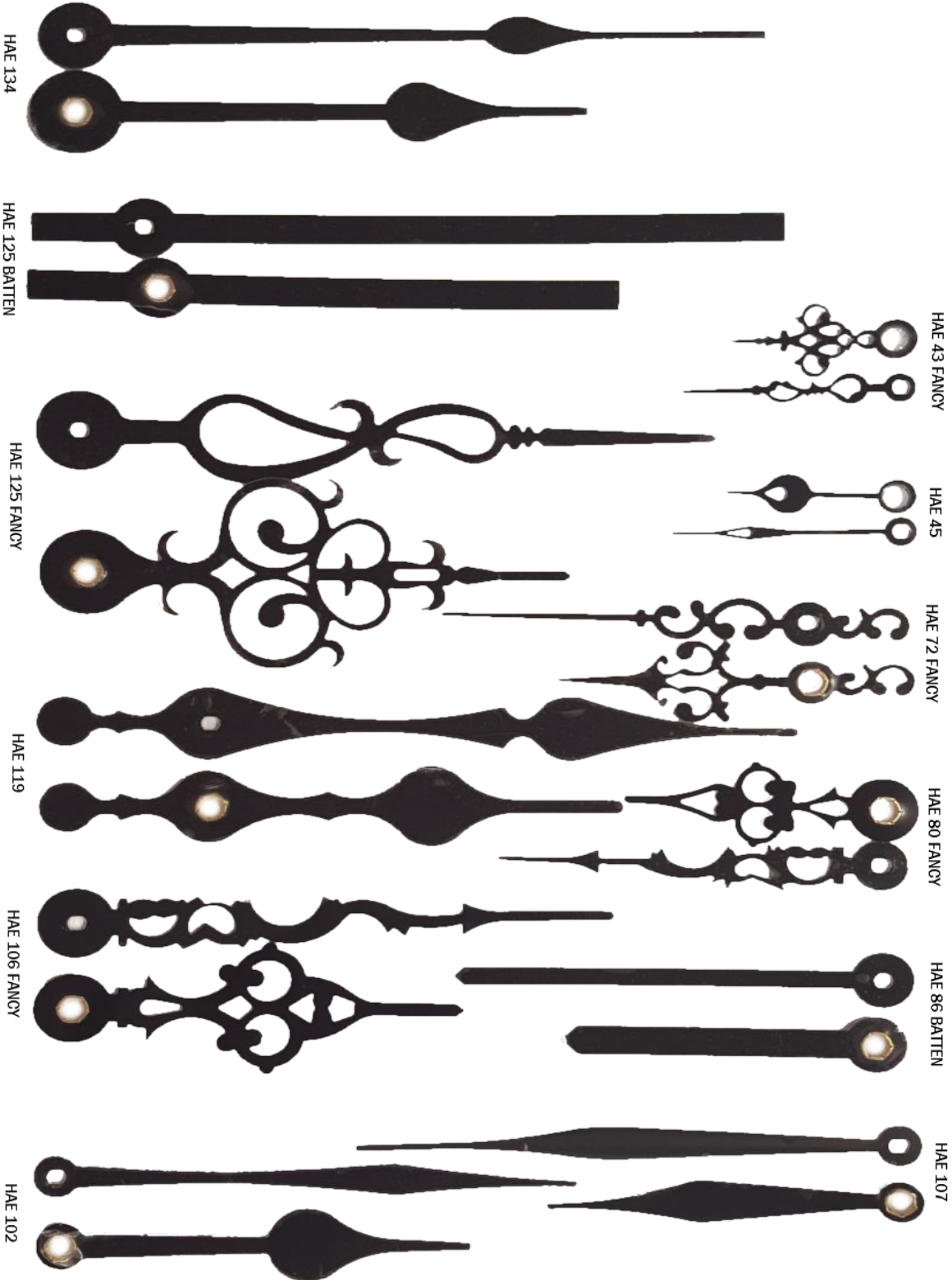


Please note all prices exclude GST

Prices are subject to change without notice.

Bulk prices are not sold in conjunction with any other specials or discounts. May 2016.

Junghans Clock Hands Black



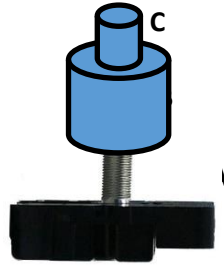
Junghans Clock Hands Gold



HAE 355 BLK Long hands for High Torque Movement
\$17.95



Wellgains Clock Modules



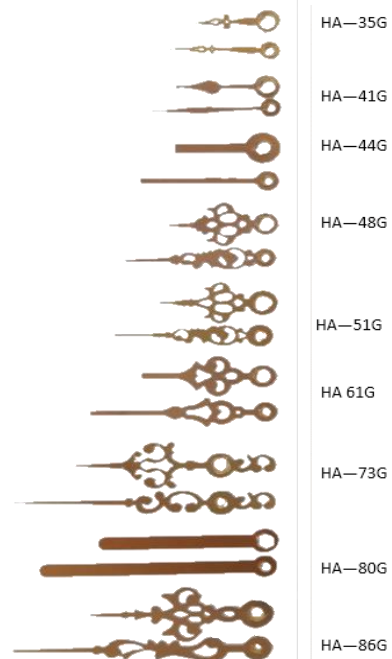
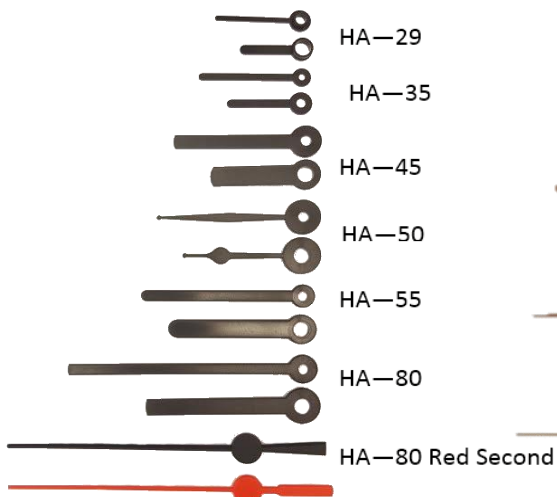
This range are push on hands only

Model	A	B	C	Max Dial Thickness	Description	Buy 1	Buy 5	Buy 10	Buy 20 +
CM VS	4.5	5.5	3.6	5	Standard 3 hand—very short	\$7.50	\$6.00	\$5.25	\$4.50
CM SS	6	5.5	3.6	6.5	Standard 3 hand— short	\$7.50	\$6.00	\$5.25	\$4.50
CM MS	12	5.5	3.6	12.5	Standard 3 hand—medium	\$7.50	\$6.00	\$5.25	\$4.50
CM LS	17	5.5	3.6	17.5	Standard 3 hand—long	\$7.50	\$6.00	\$5.25	\$4.50
CM XLS	24	5.5	3.6	24.5	Standard 3 hand—X long	\$9.50	\$7.60	\$6.65	\$5.70
CM /S	6	5.5	3.15	6.5	3 hand stepless sweep	\$8.50	\$6.80	\$5.95	\$5.10
CM /M	12	5.5	3.6	12.5	3 hand stepless sweep	\$8.50	\$6.80	\$5.95	\$5.10
CM AL	5.5	3	2.3	1.5	Snap in Alarm Clock	\$5.95	\$4.76		
CM PS	6	5.5	3.6	6.5	3 hand pendulum—short	\$12.00	\$9.60	\$8.40	\$7.20
CM PM	12	5.5	3.6	12.5	3 hand pendulum—medium	\$12.00	\$9.60	\$8.40	\$7.20
CM PL	17	5.5	31.5	12.5	3 hand pendulum—medium	\$12.00	\$9.60	\$8.40	\$7.20
CM PXL	24	5.5	3.6	24.5	3 hand pendulum—X long	\$13.50	\$10.80	\$9.45	\$8.10

Wellgains Clock Hands Range

Hour and minute push on - Gold

Aluminium \$1.50 set plastic \$1.00 set (push on hands)



Wellgains Clock Hands Range

Hour and minute push on - Black

Aluminium \$1.50 set, Plastic \$1.00 set (push on hands)

